

DECEMBER 2025

Infoline



yslsb.com



APTRANS®

Fuwa®

Binotto®
THE TIPPING POWER



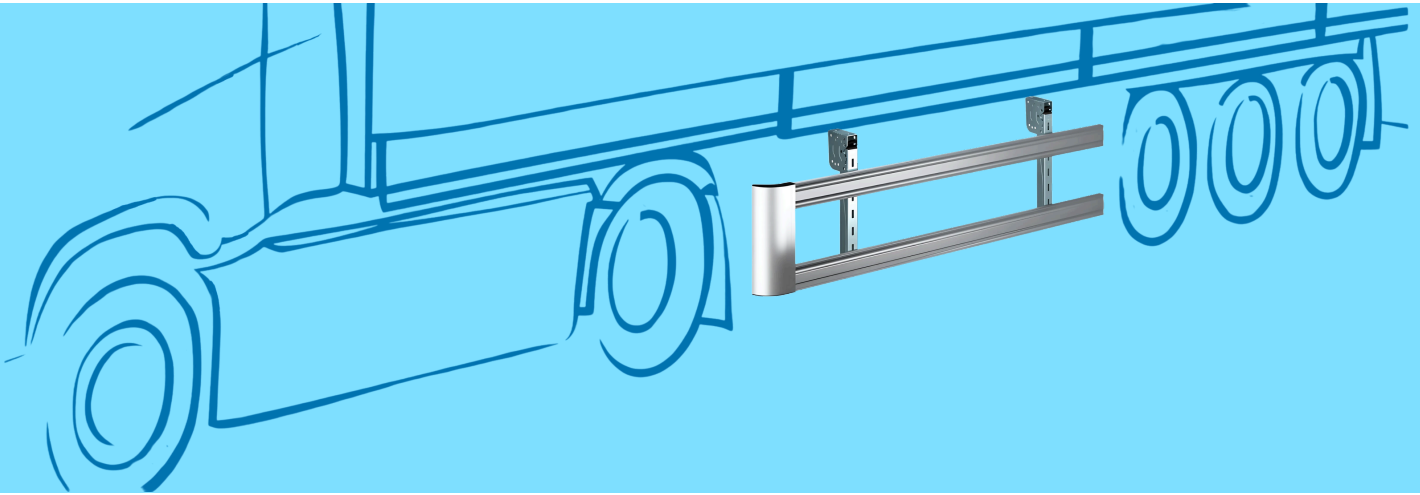
葉瑞良有限公司
YAP SWEE LEONG SDN BHD
www.yslsb.com
(69825-X)

All manufacturers' names, numbers, symbols and description used in this newsletter are for reference purposes only and do not imply that any part or assembly listed is the product of these companies. While great care has been taken to ensure accuracy in the compilation of this newsletter, the publisher cannot be held responsible for any errors, omission and/or losses incurred.



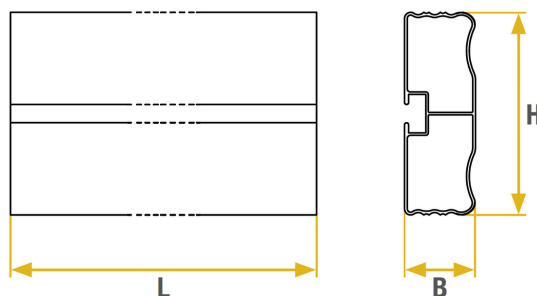
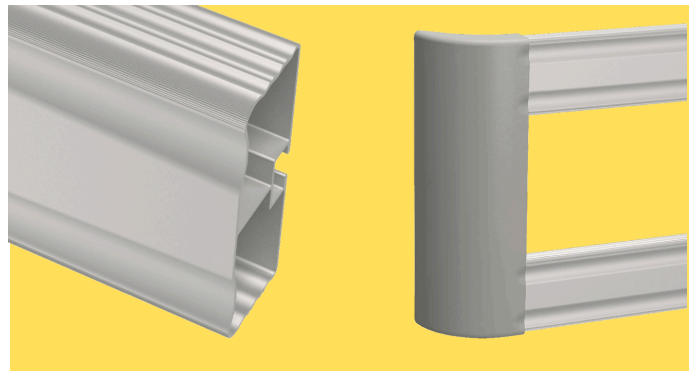
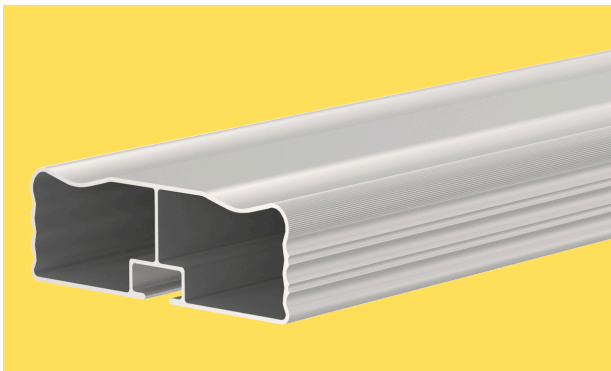
Aluminium Side Protection Bar

Aptran's aluminium side protection bars redefine safety and efficiency for commercial vehicles. Built from high-grade, corrosion-resistant aluminium and TÜV certified to meet European standards, they deliver exceptional durability with reduced weight. Designed for easy installation and long-term performance, these bars combine modern engineering with safety and environmental responsibility — the perfect blend of protection and performance on every journey.



Technical Highlights

- **High-strength aluminium construction:** Offers excellent impact resistance while keeping the structure lightweight.
- **Corrosion-resistant finish:** Ideal for long-term use in demanding environments.
- **Precision-engineered fit:** Ensures easy installation on various truck and trailer configurations.
- **VCA homologation:** Guarantees compliance with strict European safety and quality standards.



Part No	L (mm)	B (mm)	H (mm)	Weight (kg)
00-00-119-121073-TAK	6500	35	100	7.40

Plastic Toolbox

Aptrans toolboxes are engineered to deliver maximum reliability under demanding operating conditions. Manufactured from high-quality polypropylene using advanced injection molding technology, they offer excellent resistance to impact, UV radiation, and temperature variations. Their robust construction ensures long-term performance without deformation or corrosion, even in harsh environments.

All Aptrans toolboxes are TÜV-certified and tested according to European quality and safety standards, including resistance to water and dust ingress (IP-rated). Reinforced hinges, integrated locking systems, and uniform wall thickness guarantee structural integrity and secure tool storage. Available in various dimensions and configurations, Aptrans toolboxes provide flexible mounting options suitable for trucks, trailers, and industrial applications.





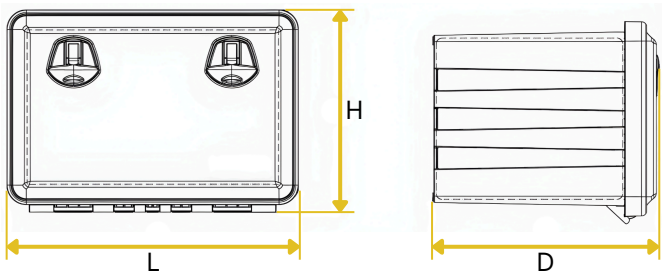
The Aptrans toolbox features a reinforced lid with a grid structure that minimizes deformation and ensures maximum resistance against impact from internal objects. Its innovative compression locking system with a hook design provides secure and consistent closure between the lid and body. Equipped with a cylinder lock and two keys, the handle enhances both security and usability. An internal EPDM seal offers effective protection against dust and water ingress, maintaining durability in demanding environments. Additionally, the reduced plastic thickness is structurally compensated by internal reinforcement ribs, which also serve as practical shelf runners for improved load organization.



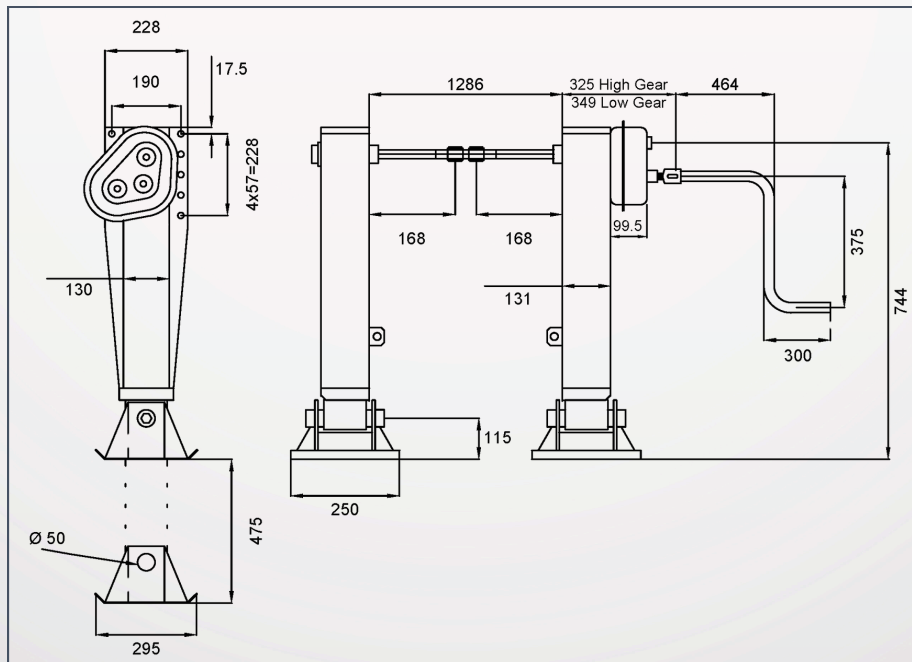


Technical Highlights

- **Robust construction:** Manufactured from reinforced polypropylene for strength and durability.
- **Logistics optimization:** Quick and easy to assemble, it can be supplied disassembled and conveniently stacked for efficient transport and storage.
- **Weatherproof design:** Dust, water, fuel, lubricating oil and UV-resistant to protect tools in all conditions.
- **Secure locking systems:** Fitted with reinforced hinges and ergonomic handles for easy, safe access.
- **VCA homologation and IP-certified:** Tested for strength, endurance, and weather resistance, meeting European quality standards.



Part No	External Dimensions L x H x D (mm)	Optimum Load (kg)	Weight (kg)	Capacity (L)
00-00-119-081008-DAK	1030 x 500 x 480	70	15.0	154
81102	500 x 350 x 400	40	3.5	40
81108	826 x 500 x 470	50	7.8	127



Part No	TL-12-110-Q2008T-SUP
Lift Capacity (kg)	20,000
Static Load Capacity (kg)	80,000
Weight (kg)	96
Mounting Holes (mm)	17
Lift (mm)	475
Low Gear (Turn/Inch)	33.87
High Gear (Turn/Inch)	4.84

Landing Leg

SuperB landing legs are engineered to meet the demanding performance standards of modern global transport operations.



Reliable Braking Power for Every Condition

Engineered for long-term durability and operational reliability, SuperB brake chambers deliver stable brake actuation by efficiently converting pneumatic pressure into reliable braking force, ensuring consistent performance across varying loads and road conditions. The spring brake units on the other hand provide both service-brake functionality and automatic parking/emergency actuation, offering a fail-safe response that maintains braking capability even in the event of air pressure loss.

Brake Chamber

Part No	Type	Stroke	Port Size
TL-11-105-000T24-SUP	T24 Brake Chamber	2.5"	3/8" NPTF
TL-11-105-00T30S-SUP	T30 Brake Chamber	2.5"	3/8" NPTF
TL-11-105-0T2424-SUP	T24/24 Spring Brake	2.5"/2.5"	3/8", 3/8" NPTF
TL-11-105-0T3030-SUP	T30/30 Spring Brake	2.5"/2.5"	3/8", 3/8" NPTF



RIM NEW LIGHTWEIGHT
STEEL MATERIAL - LW590
THICKNESS - 5.5MM

DISC MATERIAL - S420LF



Wheel Rim

SuperB wheel rims are produced in compliance with international standards and undergo electrodeposition surface treatment, followed by a top coating customized to meet specific order requirements.

Lighter wheels for lower weight — saving fuel and reducing overall costs without compromising strength.

The wheel rims are manufactured using high-grade materials to deliver exceptional structural strength and performance. Conventional wheel material (380CL/7/16 mm) offers a tensile strength of 380–480 MPa with elongation above 28%, while the lightweight wheel material (LW590/5.5/13 mm) provides an even higher tensile strength of 531 MPa and elongation above 30%. Engineered for trucks, trailers, and tankers that demand low weight without compromising load capacity, these rims feature reinforced stress points and an optimized structure that resists deformation under impact or lateral loads, ensuring long-lasting durability and reliability.

Part No	Size	No. of Holes	Hole Type	PCD (mm)	Offset (mm)	Rim Thickness (mm)	Disc Thickness (mm)
00-10-400-000169-SUP	22.5 x 8.25	10	ISO	335	170	6	14
00-10-400-022501-SUP	22.5 x 9.00	10	ISO	335	175	7	16
00-10-400-825203-SUP	22.5 x 8.25	10	JIS	285	151	7	16
00-10-400-825202-SUP	22.5 x 8.25	8	JIS	285	151	6	14
00-10-400-W2222A-SUP	22.5 x 8.25	8	JIS	285	170	7	16



Promotion

15TH DECEMBER 2025 - 9TH JANUARY 2026

Wheel Rim



RM 190.00

SUPERB 22.5x9.00 10 STUDS ISO WHEEL RIM, 16MM
00-10-400-022501-SUP

RM 180.00

SUPERB 22.5x8.25 10 STUDS ISO WHEEL RIM
00-10-400-000169-SUP

RM 160.00

SUPERB 22.5x8.25 10 STUDS JIS
00-10-400-825203-SUP

Landing Leg



RM 750.00

SUPERB LANDING LEG
TL-12-110-Q2008T-SUP



RM 15.50

SUPERB 24V 7-PIN PLUG
TL-15-113-211035-SUP



RM 13.50

SUPERB 24V 7-PIN SOCKET
TL-15-113-111022-SUP



RM 12.00

SUPERB 12V 7-PIN PLUG
TL-15-113-201005-SUP



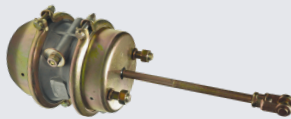
RM 15.00

SUPERB 12V 7-PIN SOCKET
TL-15-113-101028-SUP



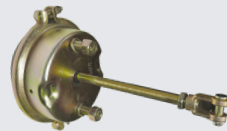
RM 60.00

SUPERB 2" KING PIN (H/D)
TL-00-104-110101-SUP



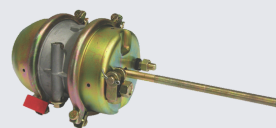
RM 80.00

SUPERB T30/30 SPRING BRAKE
TL-11-105-0T3030-SUP



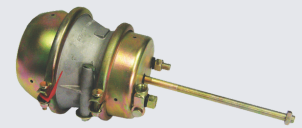
RM 36.00

SUPERB T30 SPRING BRAKE
TL-11-105-00T30S-SUP



RM 60.00

SUPERB T24/24 SPRING BRAKE
TL-11-105-0T2424-SUP



RM 60.00

SUPERB T24/30 SPRING BRAKE
TL-11-105-0T2430-SUP



RM 55.00

650X2100 MUDGUARD
TL-17-880-061040-AE0



RM 14.00

APTRANS ADJUSTABLE
MUDGUARD BRACKET, PLASTIC
TL-17-880-DK8129-APT



RM 4.00

ANTILUCE FASTENER,
WELD-ON
00-00-119-026028-AE0



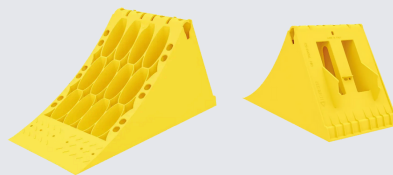
RM 4.00

ANTILUCE FASTENER,
SCREW END
00-00-119-026151-AE0



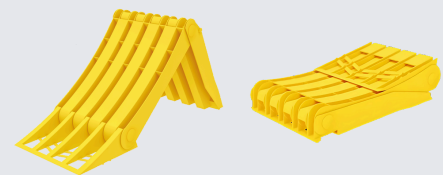
RM 105.00

10"X30" AIR TANK
TL-11-432-260810-AE0



RM 40.00

APTRANS HOMOLOGATED
YELLOW CHOCK, 467 X 198 X 225MM
00-00-119-110100-APT



RM 40.00

ORIGAMY HOMOLOGATED
YELLOW CHOCK, 472 X 199 X 230MM (FOLDABLE)
00-00-119-500100-APT

LUMAX



RM 12.00

LUMAX JUNCTION BOX
TL-15-113-005047-LMX



RM 22.40

LUMAX TATA 1313 TAIL LAMP, LH
TA-15-826-01211L-LMX

RM 22.40

LUMAX TATA 1313 TAIL LAMP, RH
TA-15-826-01211R-LMX



RM 3.00

LUMAX TATA 1313 TAIL LAMP LENS, LH (GRADE A)
TA-15-826-2TLLLL-LMX

RM 6.90

LUMAX TATA 1313 TAIL LAMP LENS, RH
TA-15-826-1211AR-LMX

Promotion

15TH DECEMBER 2025 - 9TH JANUARY 2026



RM 5.50

4 LED SIDE MARKER
LAMP-RED (SMALL)
00-15-826-L2A3RN-QNE

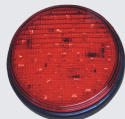
RM 5.50

4 LED SIDE MARKER
LAMP-AMBER (SMALL)
00-15-826-L2A3AN-QNE



RM 5.20

6 LED SIDE MARKER LAMP, RED 12V
00-15-826-L061R0-QNE

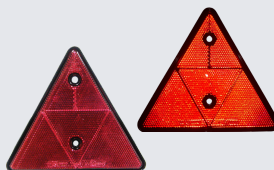


RM 16.50

LED 12V HAZARD LAMP, RED
00-15-826-L401R0-QNE

RM 16.50

LED 24V HAZARD LAMP, RED
00-15-826-L402R0-QNE



RM 3.80

RED TRIANGLE REFLECTOR
00-15-826-0000R0-QNE



RM 19.50

LED 12V HAZARD
LAMP-SQUARE, RED
00-15-826-L361RN-QNE



RM 72.00

LED 3-COMPARTMENT TAIL LAMP, RH
00-15-826-L3823R-QNE

RM 72.00

LED 3-COMPARTMENT TAIL LAMP, LH
00-15-826-L3823L-QNE

RM 72.00

LED 3-COMPARTMENTS TAIL LAMP,
LH W/O RESISTOR
00-15-826-M3823L-QNE

RM 72.00

LED 3-COMPARTMENTS TAIL LAMP,
RH W/O RESISTOR
00-15-826-M3823R-QNE



Firestone

RM 190.00

FIRESTONE 5331 AIR BELLOW
00-13-112-585331-FIR

RM 280.00

FIRESTONE 5712 AIR BELLOW
00-13-112-585712-FIR

RM 630.00

FIRESTONE 6100 AIR BELLOW
00-13-112-586100-FIR

RM 290.00

FIRESTONE 6364 AIR BELLOW
00-13-112-586364-FIR

RM 330.00

FIRESTONE 6367 AIR BELLOW
00-13-112-586367-FIR

RM 330.00

FIRESTONE 6375 AIR BELLOW
00-13-112-586375-FIR

RM 600.00

FIRESTONE 6800 AIR BELLOW
00-13-112-586800-FIR

RM 460.00

FIRESTONE 6891 AIR BELLOW
00-13-112-586891-FIR

RM 270.00

FIRESTONE 6900 AIR BELLOW
00-13-112-586900-FIR

RM 700.00

FIRESTONE 6989 AIR BELLOW
00-13-112-586989-FIR

RM 340.00

FIRESTONE 7008 AIR BELLOW
00-13-112-587008-FIR

RM 360.00

FIRESTONE 7023 AIR BELLOW
00-13-112-587023-FIR

RM 300.00

FIRESTONE 7074 AIR BELLOW
00-13-112-587074-FIR

RM 2300.00

FIRESTONE 7191 AIR BELLOW
00-13-112-587191-FIR

RM 580.00

FIRESTONE 7250 AIR BELLOW
00-13-112-587250-FIR

RM 580.00

FIRESTONE 7335 AIR BELLOW
00-13-112-587335-FIR

RM 290.00

FIRESTONE 7598 AIR BELLOW
00-13-112-587598-FIR

RM 290.00

FIRESTONE 7679 AIR BELLOW
00-13-112-587679-FIR

RM 330.00

FIRESTONE 8621 AIR BELLOW
00-13-112-588621-FIR

RM 390.00

FIRESTONE 8786 AIR BELLOW
00-13-112-588786-FIR

RM 460.00

FIRESTONE 8948 AIR BELLOW
00-13-112-588948-FIR

RM 700.00

FIRESTONE 8991 AIR BELLOW
00-13-112-588991-FIR

RM 310.00

FIRESTONE 9010 AIR BELLOW
00-13-112-589010-FIR

RM 350.00

FIRESTONE 9223 AIR BELLOW
00-13-112-589223-FIR

RM 260.00

FIRESTONE 9422 AIR BELLOW
00-13-112-589422-FIR

RM 600.00

FIRESTONE 9580 AIR BELLOW
00-13-112-589580-FIR

RM 280.00

FIRESTONE 9706 AIR BELLOW
00-13-112-589706-FIR

RM 150.00

FIRESTONE 6024 AIR BELLOW
00-13-112-606024-FIR

RM 500.00

FIRESTONE 7462 AIR BELLOW
00-13-112-607462-FIR

RM 190.00

FIRESTONE 0031 AIR BELLOW
00-13-112-950031-FIR

RM 260.00

FIRESTONE 0132 AIR BELLOW
00-13-112-950132-FIR

RM 170.00

FIRESTONE 0175 AIR BELLOW
00-13-112-950175-FIR

RM 170.00

FIRESTONE 0190 AIR BELLOW
00-13-112-950190-FIR

RM 220.00

FIRESTONE 0191 AIR BELLOW
00-13-112-950191-FIR

RM 150.00

FIRESTONE 0197 AIR BELLOW
00-13-112-950197-FIR

RM 130.00

FIRESTONE 0198 AIR BELLOW
00-13-112-950198-FIR

RM 210.00

FIRESTONE 0204 AIR BELLOW
00-13-112-950204-FIR

RM 470.00

FIRESTONE 0481 AIR BELLOW
00-13-112-950481-FIR

CASH 'N' CARRY ONLY

Offer valid while stocks last. Only Yap Swee Leong Sdn Bhd reserves the right to change the terms & conditions without prior notice.

Infoline

10

Promotion

15TH DECEMBER 2025 - 9TH JANUARY 2026



RM 210.00
FABIO 346418-S
AIR BELLOW
00-13-112-46418S-FAB



RM 230.00
FABIO 344757-1C
AIR BELLOW
00-13-112-47571C-FAB



RM 95.00
FABIO 34727
AIR BELLOW
00-13-112-034727-FAB

RM 210.00
FABIO 34881-S
AIR BELLOW
00-13-112-34881S-FAB

RM 180.00
FABIO 344713-2S
AIR BELLOW
00-13-112-47132S-FAB

RM 290.00
FABIO 3440302-C
AIR BELLOW
00-13-112-40302C-FAB

RM 260.00
FABIO 347804-C
AIR BELLOW
00-13-112-47804C-FAB

RM 85.00
FABIO 34673
AIR BELLOW
00-13-112-034673-FAB

RM 85.00
FABIO 34782
AIR BELLOW
00-13-112-034782-FAB

RM 230.00
FABIO 34951-S
AIR BELLOW
00-13-112-34951S-FAB

RM 220.00
FABIO 344881-2S
AIR BELLOW
00-13-112-48812S-FAB

RM 220.00
FABIO 344154-5CPL
AIR BELLOW
00-13-112-41545C-FAB

RM 270.00
FABIO 344911-3C
AIR BELLOW
00-13-112-49113C-FAB

RM 95.00
FABIO 34716
AIR BELLOW
00-13-112-034716-FAB

RM 90.00
FABIO 34897
AIR BELLOW
00-13-112-034897-FAB

RM 195.00
FABIO 344390-1S
AIR BELLOW
00-13-112-43901S-FAB

RM 190.00
FABIO 344884-1S
AIR BELLOW
00-13-112-48841S-FAB

RM 240.00
FABIO 344154-6C
AIR BELLOW
00-13-112-41546C-FAB

RM 290.00
FABIO 344915-1C
AIR BELLOW
00-13-112-49151C-FAB



RM 220.00
FABIO 344882-S
AIR BELLOW
00-13-112-44882S-FAB

RM 240.00
FABIO 344915-3S
AIR BELLOW
00-13-112-49153S-FAB

RM 340.00
FABIO 344183-2C
AIR BELLOW
00-13-112-41832C-FAB

RM 270.00
FABIO 449270-C
AIR BELLOW
00-13-112-49270C-FAB

RM 160.00
FABIO 2DC-220-4C
AIR BELLOW
00-13-112-C2204C-FAB

RM 270.00
V/V FM12 LIFT AXLE
BELLOW, FABIO
VO-13-112-46502S-FAB



RM 250.00
93914 AIR BELLOW
00-13-112-093914-GRA



RM 130.00
CONTI 713N AIR BELLOW
00-13-112-00713N-CON



RM 330.00
BPW 30K AIR BELLOW, ORG
TL-13-112-940910-BPW



RM 400.00
V/V AIR BELLOW, ORG
VO-13-112-076076-VOL

RM 290.00
CONNECT 160096 AIR BELLOW
00-13-112-160096-GRA

RM 130.00
CONTI 1421N AIR BELLOW
00-13-112-01421N-CON

RM 500.00
BPW 36K AIR BELLOW-4881N, ORG
TL-13-112-941010-BPW



RM 370.00
RANGE ROVER REAR AIR
BELLOW, CONTITECH
00-13-112-500080-CON



RM 250.00
SCANIA 124 AIR BELLOW, CONTI
00-13-112-13NP04-CON



RM 250.00
GOODYEAR 1B5-510 AIR
BELLOW (91903)
00-13-112-1B5510-GDY



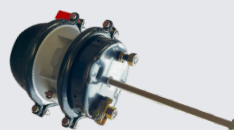
RM 250.00
DUNLOP REP' BELLOW FOR
RANGE ROVER, REAR
00-13-112-590024-DUN



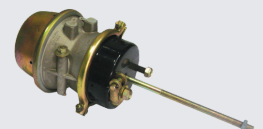
RM 90.00
1318/1625 T16/24 SPRING
BRAKE-M16 (DISC)
MB-11-105-645000-SUP



RM 76.00
BPW T24/24 SPRING BRAKE (DISC)
TL-11-105-2424DD-SUP
RM 76.00
BPW T30/30 SPRING BRAKE (DISC)
TL-11-105-3030DD-SUP



RM 65.00
T30/30 SPRING
BRAKE (BLACK)
TL-11-105-AT3030-AEO



RM 95.00
SUPERB T24/30H
SPRING BRAKE
TL-11-105-T2430H-SUP

Promotion

15TH DECEMBER 2025 - 9TH JANUARY 2026



RM 55.00

REYCO 102W LEAF
SPRING,T1 (HD)
TL-13-324-1050T1-PHX

RM 60.00

REYCO 102W LEAF
SPRING,T3
TL-13-324-7501T3-628

RM 80.00

REYCO 102W LEAF
SPRING,T3 (HD)
TL-13-324-1050T3-628

RM 55.00

REYCO 88 LEAF
SPRING,T2
TL-13-324-7803T2-628

RM 60.00

PHX 16T 3 1/2" LEAF
SPRING,T4
TL-13-324-4066T4-PHX

RM 50.00

TMC LEAF
SPRING,T3
TL-13-324-0958T3-PHX

RM 60.00

REYCO 102W LEAF
SPRING,T1 (HD)
TL-13-324-1050T1-628

RM 60.00

REYCO 102W LEAF
SPRING,T1
TL-13-324-7501T1-PHX

RM 60.00

REYCO 102W LEAF
SPRING,T3 (HD)
TL-13-324-1050T3-PHX

RM 70.00

PHX 16T 3 1/2"
LEAF SPRING,T1
TL-13-324-4066T1-PHX

RM 75.00

FUWA 68 LEAF
SPRING,T1
TL-13-324-0706T1-PXA

RM 90.00

HENDRICKSON LEAF
SPRING,T2
TL-13-324-2164T2-628



RM 35.00

REYCO 88 TRI-AXLE LEAF SPRING,T2 (HD)
TL-13-324-0330T2-628

RM 35.00

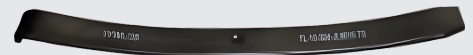
ROR TRI-AXLE LEAF SPRING,T1
TL-13-324-0998T1-628

RM 55.00

ROR TRI-AXLE LEAF SPRING,T3
TL-13-324-0998T3-628

RM 40.00

PHX LEAF SPRING, T1 FOR 9L TRI-AXLE
TL-13-324-0999T1-PHX



RM 55.00

HTP 3" TRI-AXLE LEAF SPRING, T3
TL-13-324-7530T3-PHX

RM 70.00

HTP 3 1/2" TRI-AXLE LEAF SPRING, T3
TL-13-324-9028T3-PHX

RM 60.00

HTP 3 1/2" LEAF SPRING, T3
TL-13-324-9015T3-PHX



RM 330.00

ROR 10L SPRING ASSY
TL-13-324-200080-628

RM 260.00

FUWA 68 10L SPRING ASSY
TL-13-324-1090TA-PXA

RM 290.00

ROR 9L TRI-AXLE SPRING ASSY
TL-13-324-200999-628

RM 410.00

PHX 12L TRI-AXLE SPRING ASSY
TL-13-324-202467-PHX

RM 300.00

PHX 10L SPRING ASSY
TL-13-324-200080-PHX

RM 650.00

SCANIA 2L REAR AIR SUSP
SPRING ASSY
SC-13-324-3972RA-628

RM 290.00

PHX 9L TRI-AXLE SPRING ASSY
TL-13-324-200999-PHX

RM 330.00

PHX 10L TRI-AXLE SPRING
ASSY (H/D)
TL-13-324-201002-PHX

RM 260.00

FUWA 68 8L SPRING ASSY
TL-13-324-770706-867

RM 400.00

SCANIA 113 3L REAR AXLE LIFT
SPRING ASSY
SC-13-324-8268RA-628

RM 330.00

ROR 10L TRI-AXLE SPRING ASSY
TL-13-324-201000-628

RM 290.00

PHX 9L TRI-AXLE SPRING
ASSY (H/D)
TL-13-324-201001-PHX

RM 260.00

FUWA 68 8L SPRING ASSY
TL-13-324-770706-PXA

RM 300.00

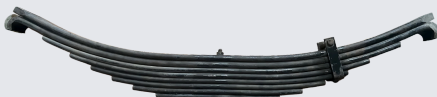
HUTCH 9L SPRING ASSY
TL-13-324-752069-628

RM 330.00

PHX 10L TRI-AXLE SPRING ASSY
TL-13-324-201000-PHX

RM 270.00

ROR 3L TRI-AXLE SPRING
ASSY-HOOK
TL-13-324-204921-628



RM 180.00

REYCO 88 8L TRI-AXLE
SPRING ASSY, (HD)
TL-13-324-0330HD-628

RM 2000.00

BOGIE SUSPENSION 17L SPRING
ASSY
TL-13-324-668010-AE0

RM 2000.00

BOGIE SUSPENSION 4L SPRING
ASSY
TL-13-324-68D010-AE0



RM 6.40

ROR SMT TORQUE ARM BUSH, FULLY PU
TL-13-324-000015-R01

RM 3.50

PHX 16T SPRING CENTRE BOLT C/W NUT, M16X255
TL-13-324-B16200-AE0

RM 20.00

ROR SMT U-BOLT C/W NUT, 15"
TL-13-324-882160-628

CASH 'N' CARRY ONLY

Offer valid while stocks last. Only Yap Swee Leong Sdn Bhd reserves the right to change the terms & conditions without prior notice.

Infoline

12

Promotion

15TH DECEMBER 2025 - 9TH JANUARY 2026



RM 6.40

FUWA-IN BSF HUB BOLT
C/W NUT, 7/8"X5 3/4"
TL-09-401-800146-AEO



RM 6.00

BPW BSF HUB BOLT C/W NUT, LH
TL-09-401-617230-AEO



RM 2.20

JIS HUB BOLT NUT, LH
TL-09-401-424111-AEO



RM 10.40

ROCKWELL ISO HUB BOLT
FOR ALLOY RIM, ORG
TL-09-401-T00118-MER



RM 1.20

ROR BSF HUB BOLT NUT-LH, ORG
TL-09-401-016417-MER



RM 1.50

ROR BSF HUB BOLT
WASHER, ORG
TL-09-401-201588-MER



RM 2.30

ROR ISO HUB BOLT NUT
TL-09-401-218643-AEO



RM 3.00

ROR BSF HUB BOLT, LH
TL-09-401-018491-AEO

RM 1.20

ROR BSF HUB BOLT
NUT-RH, ORG
TL-09-401-016416-MER

RM 1.50

T/L BSF HUB BOLT NUT, LH
TL-09-401-016417-AEO

RM 1.50

T/L BSF HUB BOLT NUT, RH
TL-09-401-016416-AEO

RM 1.60

T/L BSF HUB BOLT WASHER
TL-09-401-201588-R00

RM 2.30

ROR ISO HUB BOLT NUT, ORG
TL-09-401-218643-MER

RM 3.00

ROR BSF HUB BOLT, RH
TL-09-401-018490-AEO



RM 6.00

V/V FM REAR HUB BOLT (N/T)
VO-09-401-428545-AEO



RM 5.40

V/V REAR HUB BOLT, 4"
VO-09-401-573082-AEO



RM 1.00

ROR BRAKE SHOE
FULCRUM PIN, UK
TL-11-107-010214-ABE



RM 4.20

SCANIA FRONT
HUB BOLT, 2 1/2"
SC-09-401-290062-AEO



RM 2.80

V/V HUB BOLT NUT
VO-09-401-943491-AEO



RM 4.20

V/V FM12 FRONT HUB
BOLT, 3 1/4" (DISC)
VO-09-401-573982-AEO



RM 2.10

V/V FM12 PROP SHAFT
BOLT C/W NUT, M14X48
VO-07-411-672273-AEO

RM 6.00

SCANIA R SERIES FRONT
HUB BOLT, 2 3/4"
SC-09-401-868665-AEO

RM 2.00

TATA SE HUB BOLT NUT-
M20, GERMANY
TA-09-401-901510-Z00



RM 1.20

SCANIA 113 PROP
SHAFT BOLT, M12X50
SC-07-411-344182-AEO



RM 2.50

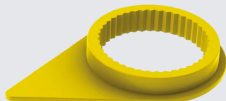
SCANIA HUB BOLT NUT, LH
SC-09-401-318689-AEO

RM 6.00

SCANIA R SERIES
REAR HUB BOLT, 4"
SC-09-401-528712-AEO

RM 5.00

SCANIA
REAR HUB BOLT, 3 1/4"
SC-09-401-295953-AEO



RM 1.50

WHEEL NUT INDICATOR, 32MM YELLOW
TL-09-401-0HBY32-AEO

RM 1.50

WHEEL NUT INDICATOR, 33MM YELLOW
TL-09-401-0HBY33-AEO

RM 1.60

WHEEL NUT INDICATOR, 41MM YELLOW
TL-09-401-0HBY41-AEO



RM 2.20

1/4" ELBOW
CONNECTOR
00-00-101-000654-T00



RM 1.60

3/8" STRAIGHT
CONNECTOR
00-00-101-010047-AEO



RM 2.40

AIR TANK DRAIN
VALVE
TL-00-101-006788-AEO

Promotion

15TH DECEMBER 2025 - 9TH JANUARY 2026



RM 55.00

HINO 8" REAR BRAKE LINING, SUPERB
HN-11-107-55610P-SUP

RM 60.00

HINO 8 1/2" REAR BRAKE LINING, SUPERB
HN-11-107-56620P-SUP

RM 45.00

HINO ZM 7" REAR BRAKE LINING, SUPERB
HN-11-107-64400P-SUP

RM 55.00

MAN 18310 FRONT BRAKE LINING, SUPERB
MA-11-107-101200-SUP

RM 60.00

MAN 18310 FRONT BRAKE LINING (HD), SUPERB
MA-11-107-1200HD-SUP

RM 90.00

MAN 18310 REAR BRAKE LINING (HD), SUPERB
MA-11-107-1230HD-SUP

RM 85.00

MAN 18310 REAR BRAKE LINING, SUPERB
MA-11-107-201230-SUP

RM 110.00

MAN 18310 FRONT BRAKE LINING, MINTYE
MA-11-107-919580-MIN

RM 170.00

MAN 18310 REAR BRAKE LINING (HD), MINTYE
MA-11-107-9582HD-MIN

RM 55.00

911B FRONT BRAKE LINING, OVERSIZE
MB-11-107-10800S-MBG

RM 40.00

911B REAR BRAKE LINING, SUPERB
MB-11-107-ZN1050-SUP

RM 55.00

911B REAR BRAKE LINING, STD
MB-11-107-ZN1080-MBG

RM 45.00

1314/1318 FRONT BRAKE LINING, SUPERB
MB-11-107-ZN1160-SUP

RM 90.00

1318/1617 REAR BRAKE LINING, MINTYE
MB-11-107-ZN1170-MIN

RM 60.00

1318/1617 REAR BRAKE LINING, SUPERB
MB-11-107-ZN1170-SUP

RM 60.00

1619/1625 REAR BRAKE LINING, MITSUBO
MB-11-107-ZN1180-000

RM 130.00

1619/1625 REAR BRAKE LINING, MINTYE
MB-11-107-ZN1180-MIN

RM 70.00

1619/1625 REAR BRAKE LINING, SUPERB
MB-11-107-ZN1180-SUP

RM 75.00

1827 REAR BRAKE LINING, SUPERB
MB-11-107-ZN1190-SUP

RM 50.00

N/S CW45 REAR BRAKE LINING, SUPERB
NS-11-107-690118-SUP

RM 45.00

N/S CPB15 REAR BRAKE LINING, SUPERB
NS-11-107-690278-SUP

RM 80.00

N/S CW45 8 1/2" REAR BRAKE LINING, SUPERB
NS-11-107-690326-SUP

RM 70.00

N/S CPB15 REAR BRAKE LINING, SUPERB
NS-11-107-690410-SUP

RM 55.00

N/S CPB12 REAR BRAKE LINING, MINTYE
NS-11-107-690471-MIN

RM 70.00

N/S CPB15 FRONT BRAKE LINING, MINTYE
NS-11-107-990278-SUP

RM 38.00

N/S CPB12 FRONT BRAKE LINING, SUPERB
NS-11-107-990716-SUP

RM 70.00

RENAULT 300 FRONT BRAKE LINING, SUPERB
RN-11-107-RN1001-SUP

RM 85.00

RENAULT 300 REAR BRAKE LINING, SUPERB
RN-11-107-RN1011-SUP

RM 120.00

RENAULT 385 REAR BRAKE LINING, PERFECT
RN-11-107-RN1041-000

RM 70.00

SCANIA 112 7" FRONT BRAKE LINING, SUPERB
SC-11-107-00SV81-SUP

RM 45.00

SCANIA P82 FRONT BRAKE LINING, SUPERB
SC-11-107-0SV261-SUP

RM 180.00

SCANIA 113 REAR BRAKE LINING, MINTYE
SC-11-107-0SV341-MIN

RM 90.00

SCANIA 113 REAR BRAKE LINING, SUPERB
SC-11-107-0SV341-SUP

RM 95.00

SCANIA 113 FRONT BRAKE LINING, MINTYE
SC-11-107-0SV392-MIN

RM 60.00

SCANIA 113 FRONT BRAKE LINING, SUPERB
SC-11-107-0SV392-SUP

RM 50.00

SCANIA 113 FRONT BRAKE LINING, SUPERB
SC-11-107-0SV401-SUP

RM 90.00

SCANIA 113 FRONT BRAKE LINING, MINTYE
SC-11-107-0SV402-MIN

RM 80.00

SCANIA 124 REAR BRAKE LINING, MINTYE
SC-11-107-0SV412-MIN

RM 110.00

SCANIA 124 REAR BRAKE LINING, MINTYE
SC-11-107-0SV421-MIN

RM 70.00

SCANIA 124 REAR BRAKE LINING, SUPERB
SC-11-107-0SV421-SUP

RM 90.00

YK 8/9 BRAKE LINING, MINTYE
TL-11-107-0YK893-MIN

RM 82.00

YK 8/9 BRAKE LINING, SUPERB
TL-11-107-0YK893-SUP

CASH 'N' CARRY ONLY

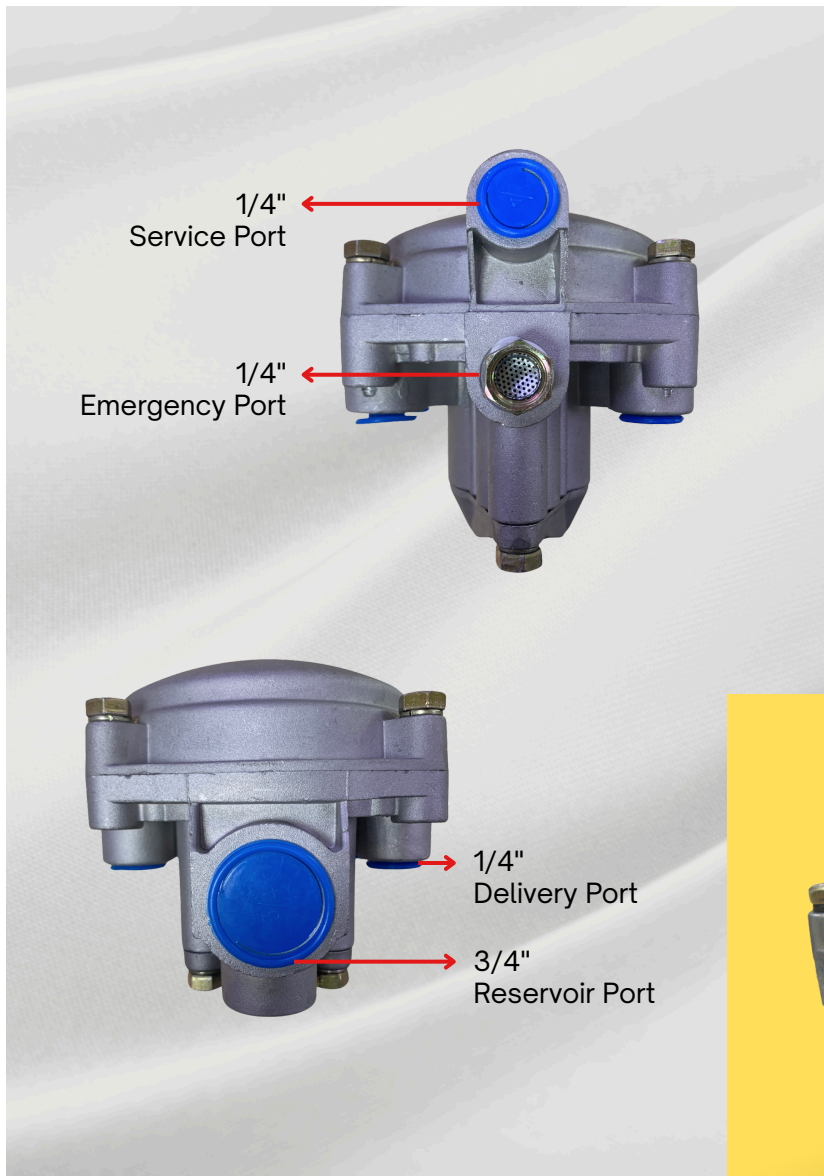
Offer valid while stocks last. Only Yap Swee Leong Sdn Bhd reserves the right to change the terms & conditions without prior notice.

Infoline

14

RE-6 Valve

SuperB RE-6 valves are designed to deliver precise relay control for quick, reliable brake application. By responding rapidly to service brake signals, it reduces lag time and ensures even, consistent braking across the vehicle.



The RE-6 valve is engineered to improve braking responsiveness in trailer air brake systems by delivering high airflow and fast relay action. It amplifies the driver's brake signal by directing air from the reservoir to the brake chambers with minimal pressure drop, reducing brake lag and ensuring balanced braking performance. Built with corrosion-resistant materials, a durable internal diaphragm, and precision-machined components, the RE-6 valve offers long-lasting reliability and stable operation under demanding road and load conditions.

FUWA NEW TYPE 13T, 1880MM TRAILER AXLES

Capacity 13 Ton, Track Length 1880mm, Inboard

TL-09-350-TS3680-FUW

DURABLE BRAKE DRUM

All brake drums are produced in Fuwa's own factory with characteristics of high temperature resistance, fast heat dissipation, deformation resistance and wear resistance.

LONG-TERM HUB UNIT

The new high-precision, long life hub unit can effectively reduce the temperature rise of bearings and grease, ensuring that your vehicle can run continuously and quickly for a long time.

SHAFT

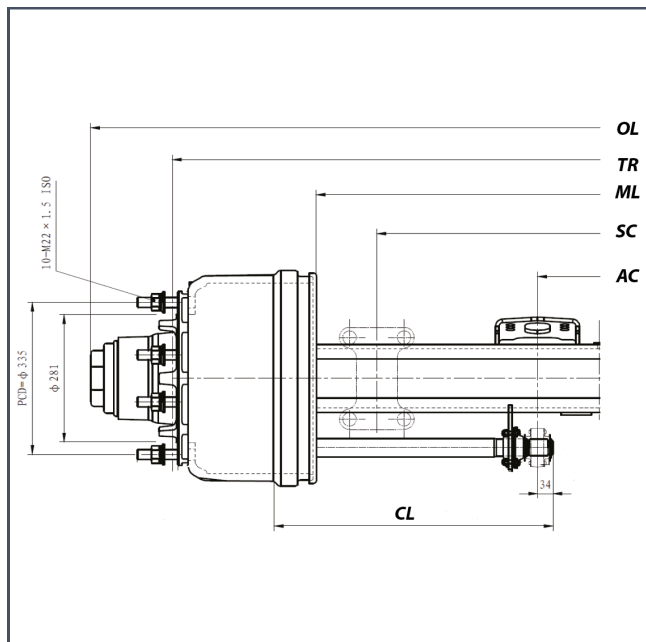
Using third generation patented thermoforming process, the shaft tube has stronger torsion and bending resistance. The tire is more evenly stressed under heavy load which effectively prolongs the service life of the tire.

BEARING

Using high precision, low rolling resistance bearings with longer service life to ensure long-term high-speed driving performance of the vehicle.

GREASE

Fuwa's special long term lubricating grease can maintain good lubricating effect at -30°C to 150°C, prolonging the service life of the bearing.



Efficient & Cost Saving

Fuwa's proprietary friction plate formula delivers powerful braking performance with minimal thermal fade, ensuring consistent control even during extended downhill operation. Its superior durability provides a service life more than twice that of conventional friction plates.

Doubled Maintenance Cycle

The latest generation of Fuwa axles offers superior durability and performance, reducing maintenance time and costs by more than 50% compared to conventional axles.

Axle Type	AB (mm)	Max Capacity (kg)	TR (mm)	SC (mm)	CL (mm)	AC (mm)	ML (mm)	Studs (mm)	PCD (mm)	H (mm)	OL (mm)
TL-09-350-TS3680-FUW	150	13,000	1,880	≥ 980	613	273	1,246	10 x M22 x 1.5 ISO	335	281	2,239

FUWA 13T, 1880MM TRAILER AXLES

Capacity 13 Ton, Track Length 1880mm, Outboard

TL-09-350-LS3680-FUW



Bearing Type:

HM518410/45

(Inner & Outer Bearing)

Type of Grease: XHP222

FUWA 16T, 1880MM TRAILER AXLES

Capacity 16 Ton, Track Length 1880mm, Outboard

TL-09-350-LR4680-FUW

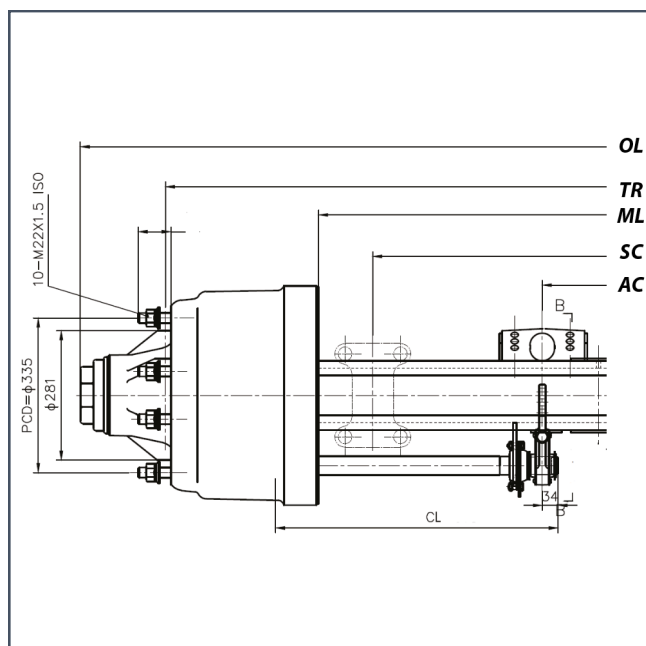


Bearing Type:

HM220110/49 (Inner Bearing),

HM518410/45 (Outer Bearing)

Type of Grease: XHP222



Fuwa axles are engineered for strength, durability, and consistent braking performance. They feature a specially processed one-piece low-alloy steel spindle with high load capacity, reduced weight, and strong anti-fatigue properties. Precision-machined braking components, a heavy-duty Q-type brake with a powerful return spring, and long-life non-asbestos brake linings ensure reliable stopping power. A sealed camshaft design prevents grease intrusion into the brake drum, while an O-ring-equipped hub cap delivers superior sealing performance.

Axle Type	AB (mm)	Max Capacity (kg)	TR (mm)	SC (mm)	CL (mm)	AC (mm)	ML (mm)	Studs (mm)	PCD (mm)	H (mm)	OL (mm)
TL-09-350-TS3680-FUW	150	13,000	1,880	≥ 980	613	273	1,246	10 x M22 x 1.5 ISO	335	281	2,239
TL-09-350-LR4680-FUW	150	16,000	1,880	≥ 980	613	244±3	1,216	10 x M22 x 1.5 ISO	335	281	2,250



Landing Leg

Part No	FW280002T
Lift Capacity (Ton)	28
Static Capacity (Ton)	80
High Gear (mm)	5.2
Low Gear (mm)	0.7



01

Lightweight yet durable design enhances vehicle load capacity without compromising reliability.

02

High-strength materials provide exceptional structural performance and superior carrying capability.

03

Optimized gear ratio enables smoother, faster, and more efficient operation.

04

Feed screw nut with integrated grease storage extends maintenance intervals and service life.

05

E-coated surface protection delivers excellent resistance to rust and corrosion.

06

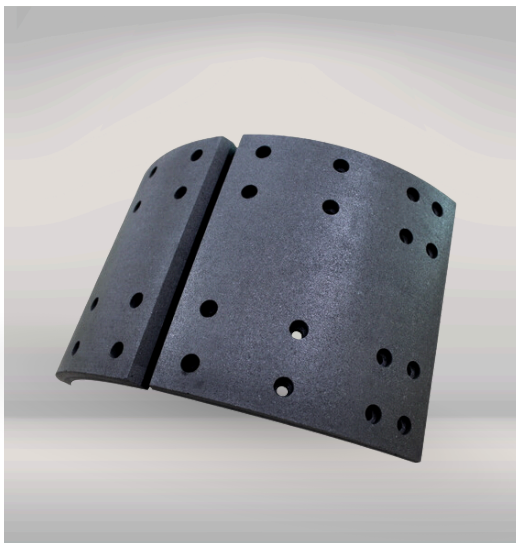
Clean, streamlined design offers a functional and visually refined appearance.

Brake Lining



Fuwa reinforced brake pads enhances the performance of Fuwa axle brake systems, providing optimal functionality and the highest level of braking safety. The Fuwa brake lining meets American FMVSS-121 and Canadian CMVSS 121 standards, offering an environmentally friendly, asbestos-free and heavy metal-free solution.

Enhanced Safety Through Advanced Brake Technology



Reliable Braking With Long-Lasting Efficiency

Designed with exceptional wear resistance and a low cost per mile, it provides excellent fade resistance for stable, reliable control in extreme conditions. Its stable friction coefficient across all speeds and pressures boosts driver confidence, while remaining gentle on brake drums even in harsh environments. Suitable for both s-cam and wedge brake systems, it combines durability with exceptional performance.

Elevating Trust, Inspiring Passion



01

Reduction in noise, friction and vibration.

02

Improved cylinder protection and service life.

03

Enhanced seal and wiper life.

04

Capacity to operate at high speeds.

05

Greater safety at end-of-stroke.

06

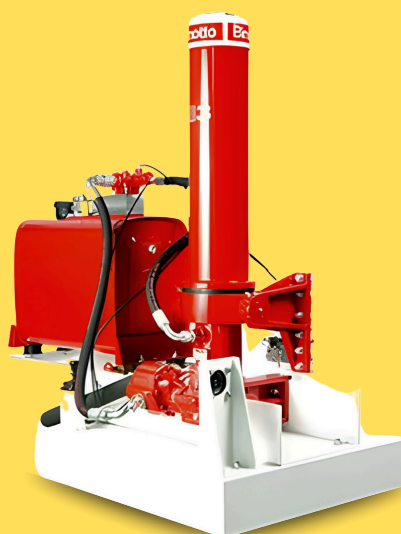
Improved vehicle stability.

07

Greater vehicle efficiency.

Binotto front-end telescopic cylinders are crafted exclusively from seamless steel tubes with high yield points and tensile strength. The MFC series is a front-end, trunnion-mounted telescopic cylinder with an outer cover, specifically designed for vehicles with a straight vertical front on the tipping body. The cylinder remains straight and vertical when the tipping body is in the rest position (maximum inclination from vertical: 10°). Featuring B3 technology, MFC series cylinders offer all the advantages of Binotto's exclusive design: they are strong, stable, and safe, increasing the system's working life and minimizing whole-life costs.

The B3 Technology, a patented innovation exclusively developed by Binotto, is now a standard feature in all Binotto front-end cylinders. Its unique design provides a brief cushioning effect during stage transitions, ensuring smoother operation. With advanced seals and wipers, the system delivers multiple benefits to the operator, cylinder, and vehicle, enhancing performance and reliability across a wide range of tipping applications.



Front End Cylinder c/w Bracket

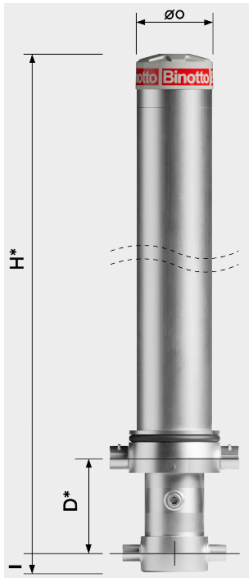
The MFC Front End Cylinders are made from premium-grade steel with high yield points and tensile strength, using seamless "one piece" tubing with integrated stop ring contact faces and high-performance seals to ensure top quality. Binotto's 'Roller Burnishing' process is applied to each seamless cylinder stage, both inside and outside, increasing surface hardness by up to 40%. The MFC series features a conical-shaped locking top head for secure outer cover attachment, enhancing robustness and safety.



Conical locking top head



Oscillating collar



Type	Working Volume (L)	Size	No. of Stage	Stroke (mm)	Max. Working Pressure (bar)	D* (mm)	H* (mm)	I (mm)	ØO (mm)
MFC_B3 210.5.8185 00-13-112-058185-BIN	181.1	Ø210	5	8185	190	343	2001	82	273
MFC_B3 187.5.7325 00-13-112-7325CK-BIN	126.7	Ø187	5	7325	220	343	1801	82	244
MFC_B3 165.5.7075 00-13-112-7075CK-BIN	92.6	Ø165	5	7075	250	343	1751	82	244
MFC_B3 145.4.5110 00-13-112-5110CK-BIN	56.3	Ø145	4	5110	304	343	1607	72	219



Underbody Cylinder



Binotto underbody telescopic cylinders are ideal for various rigid tipper chassis, including small tipping vehicles (3.5 ton GVW), commercial vehicles, crane-tippers, and quarry or construction tippers. They are also well-suited for larger tipper trailers and semitrailers with bulk payloads in agricultural, construction, and mining sectors.

Binotto's top-quality manufacturing processes and advanced technologies, along with the special internal design of these cylinders, ensure they are strong, safe, and reliable. Crafted from one-piece seamless steel with "contact faces" stop-limits directly machined on the tubes, Binotto underbody cylinders are the go-to choice for operators seeking safe and robust tipping gear.



Inverted ball mounting



Hardened pin

The BSC series features a short height, specifically designed for vehicles with limited mounting space. This type of underbody telescopic cylinder fits lower trunnions and top reversed ball attachment, making it suitable for both dump trucks and tipping trailers and semitrailers. The BSC series is especially useful as a side tipper cylinder, particularly for long side-tipping semitrailers.



Infoline



YAP SWEE LEONG SDN BHD



LOT 11B, JALAN PERUSAHAAN 2,
KAWASAN PERUSAHAAN BATU CAVES,
68100 BATU CAVES, SELANGOR,
MALAYSIA



WWW.YSLSB.COM



YSL@YSLSB.COM.MY



+603-61896363